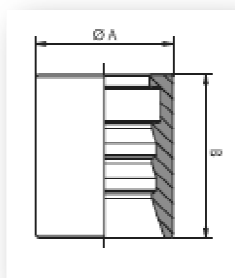


## SKIVE

Ghiere a pressare  
Swaged Ferrules  
Preßfassungen



### PF11

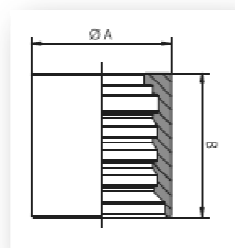
Ghiere per tubo SAE 100 R1A/R1AT EN 853 1ST / 1SN EN 857 2SC

Swaged ferrule for SAE 100/R1A/R1AT EN 853 1ST / 1SN EN 857 2SC hose

Preßfassung für SAE 100/R1A/R1AT EN 853 1ST / 1SN EN 857 2SC Schlauch

CODICE	DN	TUBO	A	B	PESO g
PF1103	3/16"	5	17	26	21,30
PF1104	1/4"	6	20	31	40,00
PF1105	5/16"	8	21	31	39,00
PF1106	3/8"	10	24	31	49,00
PF1106	1/2"	13	28	35	68,00
PF1110	5/8"	16	31	36	78,00
PF1112	3/4"	19	35	42,5	107,00
PF1116	1"	25	42	50,5	141,00
PF1120	1"1/4	32	52	59	255,00
PF1124	1"1/2	38	58	63	305,00
PF1132	2"	50	71	70	326,00

Ghiere a pressare  
Swaged Ferrules  
Preßfassungen



### PF12

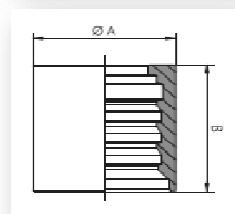
Ghiere per tubo SAE 100 R2A / R2AT EN 853 2ST / 2SN EN 856 4SP

Swaged ferrule for SAE 100 R2A / R2AT EN 853 2ST / 2SN EN 856 4SP hose

Preßfassung für SAE 100 R2A / R2AT EN 853 2ST / 2SN EN 856 4SP Schlauch

CODICE	DN	TUBO	A	B	PESO g
PF1203	3/16"	5	21	26	38,80
PF1204	1/4"	6	22	30	34,00
PF1205	5/16"	8	23	30	40,00
PF1206	3/8"	10	26	31	50,00
PF1208	1/2"	13	30	32	68,00
PF1220	1"1/4	32	57	58	277,00
PF1224	1"1/2	38	65	62	399,00
PF1232	2"	50	79	73,5	639,00

Ghiere a pressare  
Swaged Ferrules  
Preßfassungen



### PF13

Ghiere per tubo SAE 100 R2A / R2AT EN 853 2ST / 2SN EN 856 4SP

Swaged ferrule for SAE 100 R2A / R2AT EN 853 2ST / 2SN EN 856 4SP hose

Preßfassung für SAE 100 R2A / R2AT EN 853 2ST / 2SN EN 856 4SP Schlauch

CODICE	DN	TUBO	A	B	PESO g
PF1310	5/8"	16	33	38	78,00
PF1312	3/4"	19	38	42,5	118,00
PF1316	1"	25	46	51	194,00