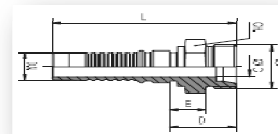


HYDROWEB

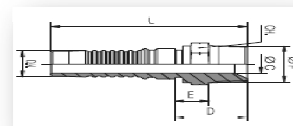
Raccordi Maschi filetto metrico sede 24° ISO 12151-2 (ISO 8434-1) per Tubi: DIN 20023-4SH EN 856-4SH SAE 100R13 EN 856-R13 SAE 100R15
 Metric thread Males 24° ISO 12151-2 (ISO 8434-1) for hoses: DIN 20023-4SH EN 856-4SH SAE 100R13 EN 856-R13 SAE 100R15
 Metrisch Aussengewindenippel 24° ISO 12151-2 (ISO 8434-1) für Schläuche: DIN 20023-4SH EN 856-4SH SAE 100R13 EN 856-R13 SAE 100R15



KMDS

DESCRIZION	CODICE	DN	TUBO	CH	FILETTO F	L	C	E	D
MCES 20S 19	KMDS1230	3/4"	19	32	M 30X2	97	14	19	35
MCES 25S 19	KMDS1236	3/4"	19	41	M 36X2	99	14	19	37
MCES 30S 25	KMDS1642	1"	25	46	M 42X2	117	19	23	43
MCES 38S 32	KMDS2052	1"1/4	32	55	M 52X2	126	25	24	46

Raccordi maschi per tubi: DIN 20023-4SH EN 856-4SH SAE 100R13 EN 856-R13 SAE 100R15
 Males for Hoses: DIN 20023-4SH EN 856-4SH SAE 100R13 EN 856-R13 SAE 100R15
 Aussengewindenippel für Schläuche: DIN 20023-4SH EN 856-4SH SAE 100R13 EN 856-R13 SAE 100R15



KMGN

DESCRIZION	CODICE	DN	TUBO	CH	FILETTO F	L	C	E	D
MAGN 3/4" 19	KMGN1212	3/4"	19	27	3/4" NPTF	98	14	36	17
MAGN 1" 25	KMGN1616	1"	25	36	1" NPTF	116	19	42	18
MAGN 1"1/4 32	KMGN2020	1"1/4	32	46	1"1/4 NPTF	124,5	25	44,5	20
MAGN 1"1/2 38	KMGN2424	1"1/2	38	50	1"1/2 NPTF	139,5	31	48	22,5
MAGN 2" 50	KMGN3232	2"	50	65	2" NPTF	157	42	53	27

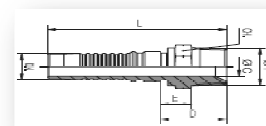
Raccordi maschi per tubi: DIN 20023-4SH EN 856-4SH SAE 100R13 EN 856-R13 SAE 100R15
 Males for Hoses: DIN 20023-4SH EN 856-4SH SAE 100R13 EN 856-R13 SAE 100R15
 Aussengewindenippel für Schläuche: DIN 20023-4SH EN 856-4SH SAE 100R13 EN 856-R13 SAE 100R15



KMGC

DESCRIZIONE	CODICE	DN	TUBO	CH	FILETTO F	L	C	E	D
MAGR 3/4" 19	KMGC1212	3/4"	19	32	G 3/4"	97,5	14	35,5	19,5
MAGR 1" 25	KMGC1616	1"	25	41	G 1"	114,5	19	40,5	21,5
MAGR 1"1/4 32	KMGC2020	1"1/4	32	50	G 1" 1/4	125,5	25	45,5	25,5
MAGR 1"1/2 38	KMGC2424	1"1/2	38	55	G 1" 1/2	143,5	31	52	30
MAGR 2" 50	KMGC3232	2"	50	70	G 2"	162	42	58	33

Raccordi maschi per tubi: DIN 20023-4SH EN 856-4SH SAE 100R13 EN 856-R13 SAE 100R15
 Males for Hoses: DIN 20023-4SH EN 856-4SH SAE 100R13 EN 856-R13 SAE 100R15
 Aussengewindenippel für Schläuche: DIN 20023-4SH EN 856-4SH SAE 100R13 EN 856-R13 SAE 100R15



KMDJ

DESCRIZIONE	CODICE	DN	TUBO	CH	FILETTO F	L	C	E	D
J 1"1/16-12 19	KMDJ1212	3/4"	19	27	1" 1/16-12 UN	102,5	14	40,5	18,6
J 1"5/16-12 25	KMDJ1616	1"	25	36	1" 5/16-12 UN	117	19	43	19,9
J 1"5/8-12 32	KMDJ2020	1"1/4	32	46	1" 5/8-12 UN	127	25	47	22,7
J 1"7/8-12 38	KMDJ2424	1"1/2	38	50	1" 7/8-12 UN	145,5	31	54	26,5
J 2"1/2-12 50	KMDJ3232	2"	50	65	2" 1/2-12 UN	169,5	42	65,5	31,6